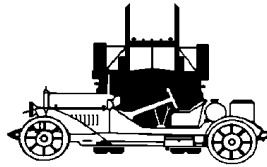


# *Miniature Auto*



Lledo LP 5406 1/20 Scale Diecast. "Toyland Cars"  
Series Photo © F. Graham Gough.

Miniature Auto is the bi-monthly newsletter of  
The New Zealand Model Vehicle Club (Inc)

A publication for and by collectors and builders of model road vehicles

*June 2000 Issue 186*

## **NATIONAL EXECUTIVE**

<b><u>PRESIDENT</u></b>	Ron Ford 52 Hillside Dr Upper Hutt Ph (04) 526 9809 Fax (04) 526 2908 Email fordrdkr@paradise.net.nz
<b><u>VICE PRESIDENT</u></b>	Graeme Robertson 121 Grant Rd Otatara RD 9 Invercargill Ph (03) 213 1354 Fax (03) 213 1454
<b><u>SECRETARY</u></b>	Eric Brockie P O Box 1356 Dunedin Ph (03) 488 1048
<b><u>TREASURER</u></b>	Stan Beavon P O Box 9264 Christchurch Ph (03) 338 9619 Fax (03) 3389612
<b><u>EDITOR</u></b>	Lee Tracey 27B Weka St Frankton Hamilton Ph (07) 8477614 Email leetra@ihug.co.nz

## **REGIONAL DELEGATES**

<b><u>WELLINGTON</u></b>	Ian Cousins. P O Box 12-057 Thorndon Wellington Ph (04) 9345172
<b><u>MARLBOROUGH</u></b>	Warren Piesse. 19 Hutcheson St Blenheim Ph (03) 5783 683
<b><u>CANTERBURY</u></b>	
<b><u>OTAGO</u></b>	Graham Patterson. 103 Musselburgh Rise, Musselburgh Dunedin. Ph (03) 4550 600
<b><u>SOUTHLAND</u></b>	Stephen Kelly. 9 Dalry St Wallacetown. Ph. (025) 239 0047

Please address all correspondence to the Secretary.  
Magazine articles and related correspondence to the Editor.  
Change of address to the Secretary.

# CONTENTS

Editorial	Page 4
President	5
Southland Branch Report	7
Competition	9
Model Scrutineer	10
Photos	13
That's News? That's News!	14



*Contributions to*

**The Editor  
27B Weka St  
Frankton  
Hamilton**



**DEADLINE**  
For MA 187 is  
To the Editor  
**16 JULY**

*The views and opinions expressed in Miniature Auto are not necessarily those held by the **NEW ZEALAND MODEL VEHICLE CLUB (Inc)** and the **Executive**, and no responsibility can be accepted for them by the **Club** and/or the **Executive***

# EDITORIAL

Hello again.

How many of you noticed the smaller size of the last issue of MA? This was caused not so much by a desire to save money on the printing costs but because there was not a lot to print unless you wanted to read about my crop of recent purchases, all of them NASCAR 1/43 diecasts from Revell. I thought that you might get as bored reading 5 identical model scrutineers as I would have gotten writing them. Things are a little livelier this month with some non-NASCAR purchases and a new competition for members.

I was approached by Carville not long after the AGM about the possibility of having a MAR type competition each issue with the prizes supplied by advertisers or club friendly shops. I thought this was a great idea so promptly threw the ball back in Carville's court as he is a lot closer to said shops than I. The results of his efforts and the generosity of Acorn Models can be found later in the mag.

I wrote a while ago about the benefits of the Internet as regards our hobby. Unfortunately over the last year or so I have several times run across what appears to be a down side. Having found something I like on the 'net I have gone to the local model shop, only to be told that we no longer have a distributor in NZ (Minichamps), or he knows nothing about it (Skid Rally Winners Collection), or "if they turn up they turn up." (Ertl 1/43rds).

I know there are many factors involved, including the difficulties caused by being such a small market in global terms. Consequently while the global choice of models has never been better the local availability seems to be at the lowest point I have experienced. (I know this is only a very short time compared to some members.) This is very disappointing as I am one of those collectors who like to spend a while checking all the details before laying out my hard earned.

*Lee*

# ~~PRESIDENT'S PIECE~~

Some years ago (probably quite a few!); there was a cartoon submitted by Carville Stewart showing a pair of asses tethered together and two piles of food placed at a greater distant than the rope could reach. The asses were depicted pulling against each other to get to their chosen pile of food. The next frame showed them cooperating and going to one pile to eat it together. I saw that cartoon again at one of the schools I work at and it reminded me that a picture is really worth a thousand words – no, really, that we get much further cooperating with each other than squabbling. Does OUR hobby have so many adherents that it can afford to fractionate? NO!

The Club seems to go through upheavals periodically. There have been many breakaway 'clubs' formed in the past. Where are they now? It may be surprising that our club is a democracy (no matter what some detractors may say) so if you feel the club is letting you down; do something about it by trying to change it from within.

Did you notice that the new Constitution was twice as big as the issue of Miniature Auto it accompanied? That certainly proved the point I made in the last President's Report.

Enough of the lectures – we have a hobby to pursue!

Boy, there seems to be a deluge of models hitting the market. Every taste seems to be catered for, but at a price. I guess this is not helped by the continual takeover activity with the major companies, with each mover seemingly wanting to get their investment back as quickly as possible. It is getting very hard to keep track of who owns what. Just recently I was admonished over writing that Corgi now owned (Lledo) Vanguards. Zindart owns Vanguards and Corgi, and they are being kept separate.

What of the kit field? I certainly don't have any expertise here, but from casual observation it seems as if the pre-built market is overtaking it.

Just look at the latest catalogues.

Back to the lecture mode for a minute – the last issue of MA was a bit light on modelling articles. I must admit that I am just as guilty on that front, so I hope to rectify it soon.

To some, Ian's article on the Internet may have seemed a bit daunting, but you don't have to be a computer nut to use the Internet. You don't even have to own a computer as there are many Internet cafes springing up around the place and most libraries can also help. Just consider it another form of information gathering. I'm sure you could get help if you are not familiar with computers. There is a lot of information out there (apart from the 100,000 porn sites that is!). Most of the major model makers have sites – like Corgi, Vanguards, Mattel, Matchbox, Ertltoys, Maisto, Tamiya, Roadchamps, Vitessegroup etc.

Most are simply addressed [www.mattel.com](http://www.mattel.com) (eg), or just do a search on the trade name.

KEEP ON MODELLING!

*Ron Ford*



Durham Classics CC-2: 1/43 1954 Ford Courier towing 32 Ford Rod.

# BRANCH REPORTS

## SOUTHLAND

### March

The March Monthly meeting was held at the usual venue on the 15<sup>th</sup>. A run down of the committee meeting was given and we also booked the Plunket rooms for another six months as it seems to be ideal for our meetings.

### Competition Results

Kitset (Large) 1<sup>st</sup>. Stephen Kelly (Yellow 57 Chev)

(Small) 1<sup>st</sup>. Owen Dickson (Yellow Toyota/Chev Ute)  
2<sup>nd</sup>. Stephen Kelly (Yellow Mini)  
3<sup>rd</sup>. Paul Connell (Yellow C-Class Mercedes)

Readybuilt (Large) 1<sup>st</sup>. Paul Thompson (Yellow Cab)  
2<sup>nd</sup>= Russell Corbett (Light Yellow Caddy)  
2<sup>nd</sup>= Stephen Kelly (Yellow Porsche 911)  
2<sup>nd</sup>= Barry McCorkindale (XY GTHO Falcon.)

*(Certainly a very monochromatic evening by the look of it. Ed)*

### All British Vehicle Club Display

The Southland branch was invited to set up a display in conjunction with the All British Vehicle Club's display held in Wachner Place on March 11<sup>th</sup>. The weather was brilliantly fine all day, which meant a good turnout of people to view both days.

Our Display consisted of 118 models from the collections of Stephen Kelly, Carolyn Gaskin and Russell Corbett, who had his Austin Princess in the 1:1 display. The models in our display weren't all British vehicles but they made an impressive display anyway.

The All British Vehicle Club's display was awesome and I must congratulate their members for the impressive condition of their vehicles. Our choice of favourite vehicle in their display was a Mk 4 Cortina 2Dr, finished in sparkling red with a black vinyl roof. I would like to thank the All British Vehicle Club for allowing us to display with them, and also to thank Russell for the use of his models and Carolyn for displaying some of her models, and for helping on the day.

## **April**

The April monthly meeting was held at our usual venue and was combined with the committee meeting as there were only 6 members present. Not a lot to report except that the Hobbies 2000 has, unfortunately, had to be cancelled permanently due to insufficient time and personnel to arrange it, as it would have been a huge undertaking.

### Competition Results

Kitsets (Large)

No Entries

(Small)

1<sup>st</sup>. Owen Dickson (Alfa Romeo 144T)

2<sup>nd</sup>. Stephen Kelly (Black Dodge Ram)

Readybuilt (Large)

1<sup>st</sup>. Paul Thompson (1929 Bentley)

2<sup>nd</sup>. Graeme Robertson (Alfa Romeo 155T)

3<sup>rd</sup>. Stephen Kelly (Black Suzuki Intruder)

(Small)

1<sup>st</sup>. Graeme Robertson (Leyland Cub Fire Appl.)

2<sup>nd</sup>. Stephen Kelly (Black Mercedes Benz 300SL)

3<sup>rd</sup>. Fred Hawkes (Volvo Ambulance)

*Stephen Kelly*



# COMPETITION

Thanks to the efforts of Carville Stewart and the generosity of Acorn Models we are happy to begin a series of competitions in each issue of MA. The prize each issue will be a 1/43 Minichamps models donated by Gary and the team at Acorn Models in Christchurch (37 Manchester St Ph 03 374 6000) and Auckland (381 GT North Rd, Grey Lynn Ph 09 360 0233) or on email at acorn@xtra.co.nz.

This month's model is the 1995 ProMarkt sponsored Mercedes C Classe of the Zakspeed team. To win this fine model you will need to send in the answers to the questions below.

Many manufacturers gave their own name to their cars, but not all.

1. Who was the Mercedes in Mercedes Benz?
2. Name the French Army officer who was the founder of Detroit (as a fur trading centre) in 1701
3. What car make is derived from the trusty vassal with the name Fulke le Breant?
4. What car was originally publicised as Kraft durch Freude?
5. How did the Swiss Y.A.X.A. get its name?

Three fairly easy questions, plus a couple to get you searching.

Answers, on a postcard (or accompanying your article for MA) to  
The Editor  
27B Weka St,  
Hamilton

by 30 June 2000. The first correct entry to be drawn out of the Editorial hat will be the winner. Best of Luck to you all.

# MODEL SCRUTINEER

## **EAGLE COLLECTIBLES #1550 1949 Mercury Club Coupe.**

Following some problems with distribution of the eagles race brand in NZ it was nice to see some of their newer models on the model stands at the National Motor Show in Hamilton during March. The ones that particularly caught my eye were the Lincoln Club Coupes, which were available in standard and customised versions. I couldn't resist and bought a standard coupe in black. (I would have bought one of the custom ones as well but I am having enough problems with the current themes without adding hot rods to the mix!).

The model features a nice crisply moulded body with very good gloss black paintwork that is blemish free. I am not so confident about the body shape, as with the same casting used for both standard & custom bodies I feel there may be some compromises with the roofline. All the brightwork has been well captured in chrome with the exception of the window surrounds which have been picked out in silver paint, much of it on the 'glass' itself. Head and taillights have plastic lenses/covers. The grille has been black washed which sets it off nicely. A particularly nice piece is the Mercury logos at front and rear which are as well done as any of the more 'prestigious' brands, as are the Mercury Eight scripts on the hubcaps.

The interior features a two tone dash with a decal for the large speedo. The smaller gauges and the radio are highlighted in silver. The two tone theme continues throughout the interior with the door panels featuring light and dark grey colours and a dark grey band across the top of the seats.

The plastic baseplate features plenty of detail, with the bottom of the engine and gearbox picked out in silver. Also picked out in silver are the twin exhausts, which run straight back from the front mounted mufflers in

what would appear to be another compromise for the custom version.

All up a very pleasing model which, at under \$40, makes a welcome addition to the collection and leaves me hoping we will see this company's products on a more regular basis, especially their Dodge Chargers and Corvette Grand Sports, which are receiving high praise overseas.

### **ROAD LEGENDS #94243-C Shelby Cobra 427S/C**

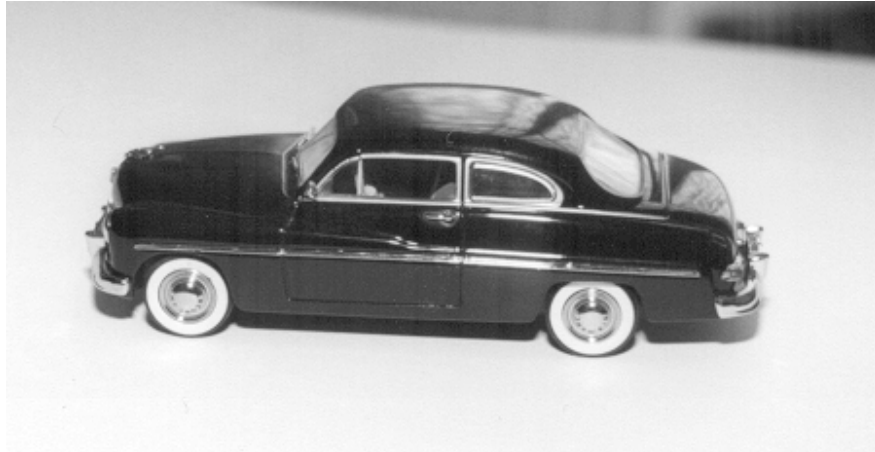
I don't normally look at the really cheap stuff in 1/43 as they are too toy-like for my tastes, but this addition to the Cobra collection was too good to pass up. This \$10 model is a surprisingly good replica of the 427 Cobra. The body is very good with all major lines looking right. The paint is a very high gloss silver which is free of blemishes. The racing stripes are in black with very little bleeding. The only fault with the finish lies with the Cobra emblems front and rear which are both skewed from the correct angle.

The headlights and front indicators feature plastic lenses while the rear lights are paint over chrome. The front and rear nerf bars, Side exhausts, roll hoop, fuel filler cap, and rear licence plate and light are all chromed. The interior is fairly basic (as was the original) with a black plastic dash/steering wheel unit, two black plastic seats, chromed handbrake and gear selector all contained in a light grey plastic tub. The instruments and glove-box are moulded in to the dash panel but not highlighted. The windscreen is in clear plastic with chromed surround and black painted sunvisors.

The only letdown to the model comes with the wheels which are bright chromed, however a quick blackwash made mine look much better and in fact reveals that they are quite well detailed and, while not strictly accurate, catch the flavour of the original Halibrands. This only leaves the matter of the ride height to mar the model. The baseplate is a simplistically detailed piece in black plastic.

With this combination of quality and price I will be looking out for further models in the range.

*Lee Tracey*

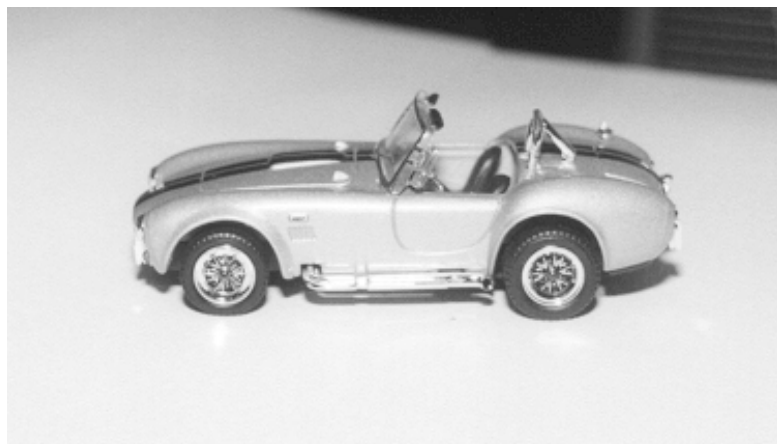


ABOVE & RIGHT  
1949 Mercury Club Coupe  
by Eagles Collectibles

Scrutineered on Previous Pages



BELOW  
Cobra 427 S/C





51A Coutts Road  
GORE9700  
Southland  
PH/fax (03)208 5247  
Mobile 025 368 876  
E.mail lairdms@esi.co.nz

**YOUR SOUTHERN CORGI GOLD STOCKIST**

**WE STOCK A HUGE RANGE OF READYBUILT AND KITSET MODELS  
NEW ARRIVALS**

**Minichamps F1 1/18 and 1/43 scale  
1999 Grid – Good range in stock  
Pre – order your 2000 grid now – for later in the year.**

**Biante 1/18 scale  
Green and Yellow XU1s \$175.00  
New Brock XU1 Arriving – Early April  
New Moffat XC Coupe – Arriving Early May**

**Hot Wheels Clothing – Here Soon**

**Also Matchbox – Hot Wheels – Minichamps – Racing Champions  
Huge range of Motorsport Art Prints**

***And much more!***

**We are THE Mail Order Specialists  
VISA and Mastercard**

***Call Roger or Karen Any Time***

# ~~THATS NEWS? THATS NEW!~~

CORGI 1/50 Diecast UK Limited Edition 2000 each Post Office Premiums  
23802 Albion LAD Single axle Dropside Trailer PO Supplies Dept  
22705 Bedford TK Box Van Telecommunications (Buzby)  
29501 Guy Warrior 6 Wheel Dropside PO Supplies Dept

## KYOSHO 1/18 Diecast Japan

KYOV0302 Minivan AA Service  
KYOV0180 Nissan Skyline 2000 GTR Silver  
KYOV0182 Nissan Skyline 2000 GTR Red  
KYOV0303 Minivan UK Police  
KYOV0181 Skyline 2000 GTR White  
KYOV0183 Skyline 2000 GTR Racing

## KYOSHO 1/43 Diecast Japan

KYOV1400 Lotus Elan Red  
KYOV1402 Lotus Elan Green

## VITESSE 1/43 Diecast Portugal

VCC 125 Porsche 904GTS Blue  
VMC 041 Renault Megane Classic II  
VCC 034 1963 Austin Vanden Plas 1300  
VCC 050 1985 Renault 2CV "Fireball"  
VCC 068 1966 MG 1100 Red  
VCC 093 1982 Renault 5 TX  
VCC 128 1983 Renault 5 Campus  
VMC 045 1999 Toyota LandCruiser LWB  
VMC 052 Mitsubishi Pajero Pininfarina  
V98136 1966 Morris 1100 Light Blue  
VCC 044 1978 Renault 5 Turbo Street  
VCC 060 1965 Wolsley 1100 Green & Biege  
VCC 069 1968 Alfa Spyder 1750 Open  
VCC 109 1981 Renault 5 Alpine Turbo  
VMC 044 Renault Clio II 16v Rouge Vif  
VMC 075 1995 Renault Megane II Break

## SKID 1/43 Diecast Portugal

SKM 085 Mits. Lancer Evo5 Acr99 Drivacos  
SKM 098 Ford Focus SR99 Solberg  
SKM 105 Mits. Lancer Evo6 TdC99 Trelles  
SKM 133 Land Cruiser Port Off Road Ch.  
SKC 012 Renault 5 Turbo TdC80 Calberson  
SKW 015 Mits. Lancer Evo6 T.Makinen WC  
SKW 016 Mits. Lancer Evo6 MC00 Makinen  
SKM 066 Mits. Carisma GT Safari99 Al Wahabi/Tony Sircombe  
SKM 091 Peugeot 206 WRC MC00 Panizzi  
SKM 101 SEAT Cordoba WRC E2 Fin99  
SKM 107 Peugeot 206 WRC MC00 Delecour  
SKC 009 Renault 5 Turbo Tdc80 "Gitanes"  
SKC 017 Renault 5 Maxi Turbo 1<sup>st</sup> TdC85  
SKW 017 Peugeot 206 WRC SWE99 Gronholm

## ONYX 1/43 Diecast Portugal

XCL 017 Porsche 911GT3 Wilk. Sword  
XCL 024 Porsche 911 GT3 Teldafax  
XGT 006 BMW V12 LMR #43 Sebring99  
XTC 010 Nissan Primera BTCC99 Aiello  
XTC 017 Nissan Primera BTCC99 Neal  
XCL 022Porsche 911 GT3 Chereau  
XGT 005 BMW V12 LMR #42 1<sup>st</sup> Sebring99  
XLM 020 BMW V12 LMR #17 LM99  
XTC 011 Nissan Primera BTCC99 Leslie  
XTC 020 Nissan Primera BTCC99 Rustad

QUARTZO 1/43 Diecast Portugal

QFC 016 March 701 Ger GP70 Hahne    QFC 053 Brabham BT50 1<sup>st</sup> Can82 Piquet  
QFC 054 Brabham BT50 Swi82 Patrese    QLM 015 Porsche 962C LM82 Porsche Canada

2 WHEELS 1/43(?) Diecast Portugal

TWR 015 Yamaha YZR 500 98 J.M. Bayle    TWR 016 Yamaha YZR 500 98 K.Nanba  
TWR 049 Yamaha YZR 500 Laconi "Red Bull"

VICTORIA 1/43 Diecast Portugal

RMV 005 Opel Blitz Wehrmacht

EXOTO GP Classics 1/18 Diecast USA

1979 Ferrari 312T4 South Africa GP Shekter or G. Villeneuve (1<sup>st</sup>)



Vitesse VCC 060 Wolsley 1100  
Green and Biege



SKID SKC 009 Renault 5 Turbo TdC 80  
Complete with Tobacco markings!



KYOSHO KYOV0303 Minivan  
UK Police



QUARTZO QLM 015 Porsche 962C  
Porsche Canada  
Good to see a totally new livery

## **DIE CAST MODELS** **AT REALISTIC PRICES**



**AMERICAN MUSCLE, ANSON, AUTOart, Bburago,  
BIANTE Classics CHRONO, Classic CARLECTABLES,  
EAGLES RACE , ERTL, EXOTO Collectibles  
KYOSHO, LIBERTY CLASSICS, Maisto, MIRA,  
MOTOR CITY classics, Revell, ROAD LEGEND, SOLIDO,  
HOT WHEELS, MATTELL, MATCHBOX, UT models....**

### **ARRIVING**

**FORD MODEL T  
MITSUBISHI EVO 6 LANCER ROAD & RALLY  
SUBARU WRX  
FORD FOCUS**



## **Donnithorne Simms**

**Cnr Montreal and St Asaph Sts Christchurch  
Phone (03) 3790 588 Fax(03) 3714 707 PO BOX 140  
[www.simms.co.nz](http://www.simms.co.nz)**