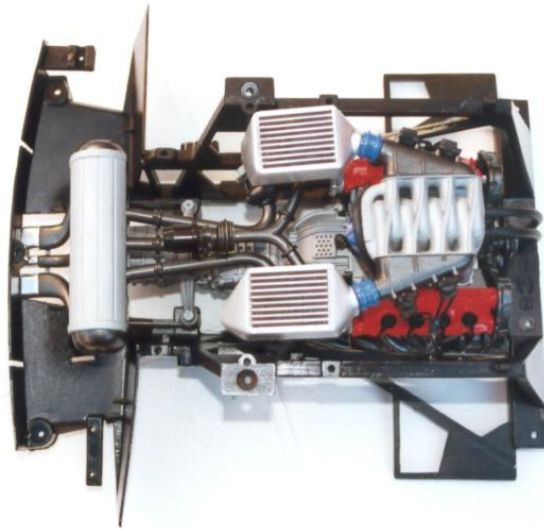
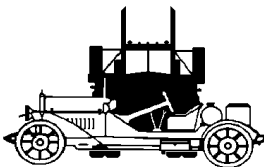


Miniature Auto

A publication for and by collectors and builders of model vehicles



Ferrari Rear Sub Assembly. See Page 9 for more.



August 2002 Issue 199

Miniature Auto is the bi-monthly newsletter of
The New Zealand Model Vehicle Club (Inc)

CLUB DIRECTORY

NATIONAL EXECUTIVE

<u>PRESIDENT</u>	Lee Tracey PO Box 5453 Hamilton Ph (07) 847 7614 Email leetra@ihug.co.nz
<u>VICE PRESIDENT</u>	Graeme Robertson 37 Vyner Rd Otatara RD 9 Invercargill Ph (03) 213 1354 Fax (03) 213 1454
<u>SECRETARY</u>	Eric Brockie P O Box 1356 Dunedin Ph (03) 488 1048
<u>TREASURER</u>	Stan Beavon Tennyson St, Rolleston Ph (03) 347 4355 Fax (03) 347 4357
<u>EDITOR</u>	Lee Tracey PO Box 5453 Hamilton Ph (07) 847 7614 Email leetra@ihug.co.nz

REGIONAL DELEGATES

<u>WELLINGTON</u>	Ian Cousins. P O Box 12-057 Thorndon Wellington Ph (04) 934 5172
<u>MARLBOROUGH</u>	Warren Piesse. 19 Hutcheson St Blenheim Ph (03) 578 3683
<u>CANTERBURY</u>	John Skene.. 124 Warren Cr, Christchurch Ph (03) 339 0058
<u>OTAGO</u>	Graham Patterson. 103 Musselburgh Rise, Musselburgh Dunedin. Ph (03) 455 0600
<u>SOUTHLAND</u>	Graeme Robertson 37 Vyner Rd Otatara RD 9 Invercargill Ph (03) 213 1354 Fax (03) 213 1454

Please address all correspondence to the Secretary.
Magazine articles and related correspondence to the Editor.
Change of address to the Secretary.

IN THIS ISSUE

Editorial	Page 4
President	5
Branch Reports	6
Dear Sir	8
Model Market	8
Pocher Report	9
Modelling with Maurice	11
Dear Sir Pt2	13
Dear Sir Pt3	14
Photos	15
Pit Report	16
That's News? That's News!	18



Contributions to

The Editor
PO Box 5453
Hamilton



DEADLINE
For MA 200 to
The Editor by
16 Sep 2002

Club Website: www.nzmvc.in-newzealand.com

The views and opinions expressed in *Miniature Auto* are not necessarily those held by the **NEW ZEALAND MODEL VEHICLE CLUB (Inc)** and the **Executive**, and no responsibility can be accepted for them by the **Club** and/or the **Executive**

EDITORIAL

Not a lot springs to mind to write about for this month. The only interesting things since last time are covered either in the Presidents Piece or the Pit Report.

Subs are due at the end of this month. Almost unbelievably seven members of the Otago Branch have paid theirs as of the middle of July. Incidentally the recent displays have not only been good as displays but have seen several new members join the Branch. Welcome aboard to you all.

How are the rest of you going with attracting new members? Or even keeping the old ones?

After all the rain in this part of the country it is good to finally get some sunny weather. I was able, at last, to paint the body of my Tamiya RX7 today so hopefully I will be able report on its completion by next issue. Anybody else completed any recent builds?

Have received an email from someone as a result of seeing the web site. Will be talking more to him after I finally get MA finished. He's another rotary fan!

That's All for now

Lee Tracey

The editor succumbs to his craving for another shot of Jagermeister! Courtesy of Eagle Collectibles "Maxmorllz" Porsche 934 Turbo



PRESIDENTS PIECE

Not a lot to report this month other than Southland Branch have turned down the invitation to host the 2003 AGM. The Executive have therefore invited Canterbury Branch to host this event. Hopefully I will have some definite information for members to plan their travel and accommodation by the next issue of Miniature Auto.

Was making my way to Frankton Models the other Wednesday for my weekly visit when I spied a man bent over some boxes at the rear of his 4x4. Closer inspection revealed the boxes to contain a large number of Spark Models. For the uninitiated Spark Models are a relatively new company who specialise in resin 1:43 handbuilt Le Mans Racers. In 18 months they have built up a very good reputation among Le Mans Collectors for both high quality at a low price and the great choice of subject matter.

John, the gentleman delving among the boxes has put considerable money into importing the range into NZ. I caught him at the first stop of his North Island tour of Model shops to get them out to the market. After the North Island he is hoping to get round the South Island. The models will only be available at the more specialist model shops (ie not at Toyworld) so keep an eye out.

While they do not sell direct to the public John has a website at www.spr.co.nz where you can see what is available, and after the tour is complete you should also be able to find a list of shops that sell the models.

Of course I did not let him escape without adding an MG EXP257 from LM 2001 and a Cunningham Le Monstre to the Frankton pile for me.

At a lower end of the market I see The Warehouse now carry the Welly range of Chinese made toy cars. These are good looking models at very cheap prices. The Hongwell Cararama range (as mentioned by Ron Ford in Classic Car) are starting to make an appearance in the shops.

For the large scale collector the new AutoART arrivals in the form of the Chaparral 2 and Jag XJ13 are absolutely awesome models that blow certain makes costing three times the price out of the water.

Happy Collecting
Lee Tracey

BRANCH REPORTS

HSOUTHLAND

Happy Motoring Display

This display was held on the 15th of June at Happy Motoring's Showroom. After a slight hiccup concerning the tables, which was rectified without a problem, we set up our display.

There was a total of 286 models on display, from the collections of Paul Thompson, Allan Graves & Stephen Kelly, along with the branch's current raffle in which a few tickets were sold on the day. We weren't flooded with visitors but did have a steady trickle of viewers during the day. Our esteemed Branch treasurer arrived later in the day and was a little disappointed to say the least as he thought that the display was the following weekend. But in spite of that we still managed an impressive display.

One model that impressed me was Paul Thompson's remote controlled McLaren race car which I would love to have taken home.

I would like to thank the following people for their help; Maurice Skeggs – for allowing us the venue; Paul Thompson – for organising the venue and for sponsoring the event and taking the time, along with his mum, to display models and help man the stand; Allan Graves also for help manning the stand and displaying his models, and Joy Thompson for making cups of coffee to keep us going. Thanks also to Fred for coming in to help.

Stephen Kelly

OTAGO

Model Expo 2002

Held during June this was a great success. The display was one of the best we have done and we certainly received our share of publicity in the news media during and before the show. While our displays may not be of Museum or Art Gallery standard from our organisations point of view I consider that the standard of our displays is high and we always seem to receive good comment from the

paying public who visit the displays.

Because of the display we have already had four new members join the club. One new member for the Southland Branch and three for Otago. Almost 1600 models were on display including those entered in Model Car Festival 2002, so it all helped to create a great display with the wide variety of commercial vehicles, TV and Movie related models and of course the old faithful Fun Ho! Models. There were many members of the public who brought along Fun Ho! Models to be identified, valued or to try and get parts for them.

Model Car Festival entries were up on last year but of course we would like to see more new entries again in next years competition.

A special thanks must go to the advertisers who placed their adverts in the half page supplement of the Otago Daily Times because without them our supplement would not exist. The Otago Branch Executive says thanks to Cooke Howlison Toyota, Offens Books & Toys, Roslyn Books & Toys, Toyworld, Clints Autos, Hillside Books & Exchange, Collectible Clutter and Zodiac Antiques. We also extend our thanks to three members of the public who supplied a great selection of TV & Movie related models, Tow Truck Models and an extensive range of Star Wars.

Thanks also to the members who so willingly gave up their time to set up, man the display and again dismantle the display.

Eric Brockie



Photo showing part of Otago Branch display at Model Expo 2002

DEAR SIR,

I always enjoy reading the Miniature Auto but the article entitled 'A History' in Issue 197 was exceptional.

Carville's extensive coverage brought back many memories of my own younger days. My school friend and I would cycle into town to Minsons after school and I well remember the china rattling with every step as we eagerly made our way to the back of the shop to ask if the latest Matchbox shipment had arrived yet. On one occasion, as a gimmick, there was a real live bull in the window – it's certainly the only time that I have ever seen a bull in a china shop!

I, like Carville, bought many of my models from Hobdays in Colombo St, and on a Saturday my sister and I would go to the Century Theatre during those years, so no doubt I bought an ice cream or two off Carville's tray.

That was a superb article and I was totally engrossed from the moment I started reading it. Many Thanks

John Henderson

MODEL MARKET

For Sale

200 models of varying scale, manufacturer and quality. Includes many Rolls Royce and Matchbox.

For copy of list contact Howard Brockie

11 Brockville Road

Dunedin

ph - 03 4762372 or Email - habrockie@value.net.nz

Wanted

Any 1:18 Ferrari Model by Eagles Race. Must be V. Good to Mint Condition.

Any 1:18 Model Of A Ferrari F512 TR. Reply with Condition & price to

Dick Marquand

PO Box 32

Cromwell

Central Otago

Ph 025 344258

POCHER REPORT

I brought this kitset because the Ferrari F40 was one car that had always impressed me. In my mind it was one of the nicest looking Ferraris ever built. Once finished the kit makes an impressive addition to any collection though I think that for the money involved it could be better. A 1:8 scale model gives plenty of scope for detail yet on this model a lot of wiring, fuel lines etc, are just not there. Some fuel and water lines are included but to get them to retain the shape required I had to thread wire through the center of the tubes. Something as simple as tyre valves are just non-existent.

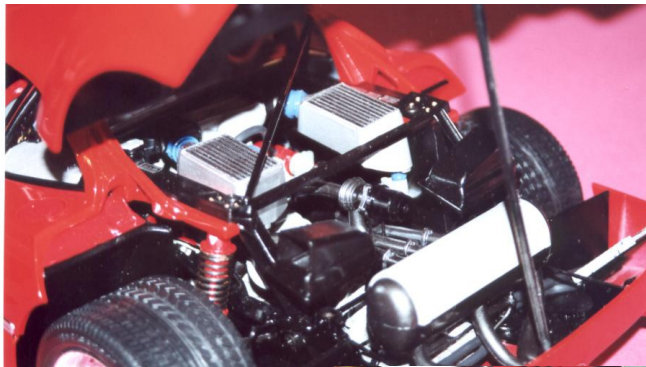
The finish of parts was good and although all are moulded in the correct colour I decided to paint everything other than the die cast body which comes pre-painted. Apart from giving a better finish it also meant that plastic body parts visible alongside the die cast body could be finished to a closer match. The paint finish of the body is excellent.

Assembly is straightforward in the main and as long as the comprehensive instructions are followed no problems should be encountered. As the whole kit is either screwed together or pushes together most can be disassembled if required. The fit of parts was generally good although three areas stood out as being very poor. They were

- 1) – The exhaust/turbo connections were well out of line and required drilling and pinning to hold them in place.
- 2) – The front bonnet does not line up when closed without some force although when in either the fully open or fully closed position there is no obvious alignment problem. I have pulled it all apart to see if there was anything I could do to adjust the alignment but with nothing obvious I decided to live with it as is.
- 3) – The fit of both doors was the worst fault of the whole kit. Once again the doors and hinges were stripped down and rebuilt to check it was not my mistake but the only way of fixing was to heat and reshape both the frame and window. As the problem is once again only apparent when opening or closing the doors I decided not to risk making the problem worse and leave it as is. The top of the doors stick out 8-10mm from the bodyline but when the doors are closed the frame and window are held in place by the body.

The above are the main faults with this model and I really expected better on a model of this standard. However when it is all finished it is a great model of one of my dream cars. All I need now is to be lucky enough to see a full size version

so I can get some photos to enable me to add some of the missing detail. *Unfortunately I believe the only example brought into NZ has since been sold overseas. However the Internet probably has many useful pictures. I suggest a Google.com image search using 'Ferrari F40' as a good place to start. Ed*



Above: Engine detail

*Right: Pocher 1:8 scale
Ferrari F40*

Below: Rear view



MODELLING WITH MAU-

Talkin' about Plastic Kits

Are there any plastic kit modellers out there whom like to throw caution to the wind and attempt to build something different? I'm referring to those of you who have assembled out of the box kits and then went on to modify, alter and maybe scratch build something.

I'm in this category, having progressed from assembling Box stock, to hot rods, customs, altered and semi scratch built. All were static kits, but then I wanted more – I wanted to see some sign of illumination on models, even movement! Okay so no kits have such provisions, well not when I was building kits.

Anyway with kit building and conversions one acquires imagination gaining an insight into what a particular idea would look like before going ahead and building. I try to sketch ideas and make notes as ideas come to mind. I have a notebook listing many ideas for future projects. Often I have seen photos of real hot rods and street machines, mentally noting that a scale model of the same would look mighty good.

But as I mentioned earlier, how to add more realistic details to scale models. While in toy and hobby shops I constantly scan shelves looking for 'donation models' that could give up various items used to enhance kit projects. I don't spend unlimited dollars, that only makes the hobby more expensive. If one waits long enough often that certain item will come up at a sale.

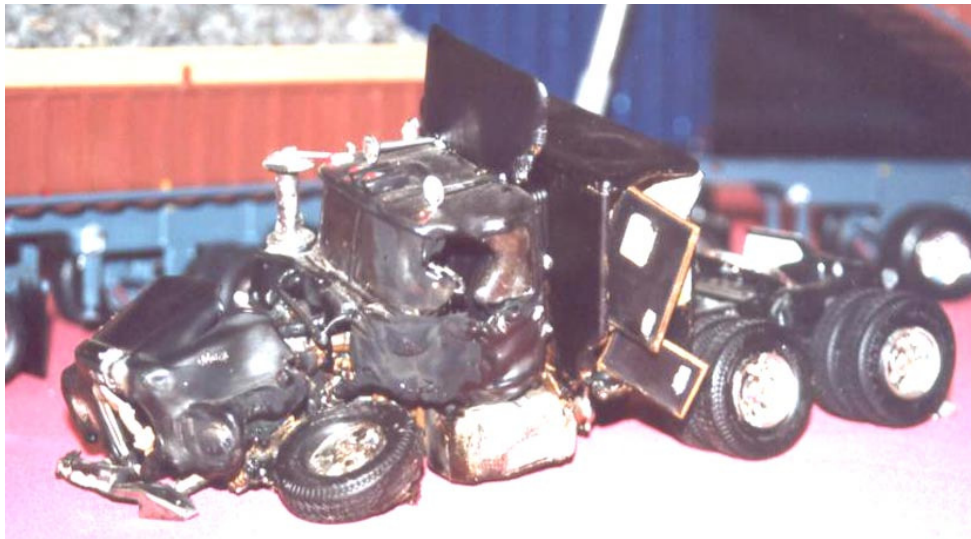
Often I have had a notion to do a conversion and having found all the necessary items have put it aside to work on another. But then it can be worked on at another time. Also I have begun a conversion job only to find it more work than anticipated so have put it aside. I therefore look at other methods or ways to complete the job. However, I can honestly say, some of these conversions can be sitting about for several years!

I've begun one or two conversions that other modellers have taken a fancy to, they have built their version while mine remains unfinished. But that's okay, that's what the hobby is for – To share ideas and learn. As I write this during a cold weekend I actually began working on a model or two before picking up a pen and writing this. I find I have to be in the mood to do this hobby. I've been itching to get onto more building for a month or two and now I've started, look out!

What am I working on – well I'm Beginning to assemble a stock model kit for a fellow modeller whom is a diecast collector, but once he sees how plastic kits look beside those metal models I'm sure he will cross over. Ahem. Although I wish to finish my '46 Ford Tudor sedan conversion I've begun a '36 Ford pick Up Drag Racer – motorized. This is a combination of two friction drive models plus some kit parts. A lot of cutting, filing and drilling and hopefully an interesting model at the end. As the model is to be mobile or a runner I didn't think a plastic kit would stand up to any knocks so I chose a stronger plastic body to work on. It's 1:25 scale and a nicely detailed body.

The donor model is a toy dragster bought at a sale price, giving up its drive unit to power the pick up. At this stage I don't know if it will work successfully or not, but if it doesn't it just gives one more experience, and more insight into future conversions.

Maurice Boyles



BREAKER! BREAKER!
*Otago Member Bruce Dobsons 'Rubber Duck' from the Monogram kit.
Plenty of the creativity Maurice alludes to here!*

DEAR SIR, PT 2

Interesting letter from Stephen Kelly in MA 198. If Mr Kelly is interested in sending me a copy of the hints he was writing about I shall be very grateful for his help eg Painting hints either hand painting or spray painting, adding extras, detailing etc or any other hints he may have to improve my work, I would not mind paying him for this work.

Concerning decals, Twice now I have had nothing but problems with decals and these have been decals failing to bits in water the other has been decals refusing to lift off the backing paper. I tried some hints about decals falling to pieces , like painting on clear varnish before adding to the water but to no avail, they still fell to pieces, ended up having to paint the model the best I could and the owner of the model was not very happy because the decals were very intensive and the colours I used were not exactly matched up to what the decal colours were simple reason being that it was near impossible to obtain a perfect match, not only that but there was a lot of masking to do and this was nearly impossible also because of the shape of the model aircraft. The not lifting from the backing paper problem I also tried a few tips given to me re steaming them off and also adding a amount of micro sol decal setting solution to the water, but again nothing worked. Does anybody have hints about these two problems.

As far as articles into the MA I can see Stephens point of view here. Why waste pen to paper, a great disappointment. Like Stephen I also have a few die cast models but as stated put them on the shelf and that's it, all the works been done for you and what fun is there in that. But good luck to the members who prefer this type of collection I hold no grudge to anybody who collects them.

We just held a meeting on Thursday the 6th of June and if I remember there were seven present and it was not a bad meeting at all some of the things that came up made the meeting worth while being there. A lot of subjects were mentioned including that our club is going to hold a display day on the 20 of July at the RSA Blenheim for the purpose of showing the Public what goes on at our club, hopefully it may encourage a few new members into the club. Its just a bit disappointing that the models which are going to be displayed could not be judged in some way just to make it even more interesting for those who are going to have models on display, but it seems that certain members do not want this.

Warren Tyson

DEAR SIR, PT 3

I have just read in MA 198 about the new Minichamps (1:18?) Can Am McLaren model cars driven by Denny Hulme. Well I now have bought my third 1:18 model McLaren , two driven by Bruce and the third by Dan Gurney. Dan Gurney had not planned to race in the Can Am series, but in 1970 Dan Joined the McLaren Team after hearing about his friend Bruce and that Denny Hulme had a painful injury plaguing his driving. Dan raced in an M8D similar to the one Bruce crashed in during a testing session.

As you can see in the photo what nice models they are and that the detail is well done, able to lift the backs off each one to view the engine etc, soft tyres, opening doors. Models 8A, 8B and 8D McLarens are by GMP Peachstate and the F1 GTR 1996 is by UT Models.

Peter Haack

(The Minichamps models are 1:43 scale and now include A, B, D, & F versions of the M8. GMP have just released 1:43 scale versions of the M8A with engine detail. Once again years without anything then two at once. Ed)

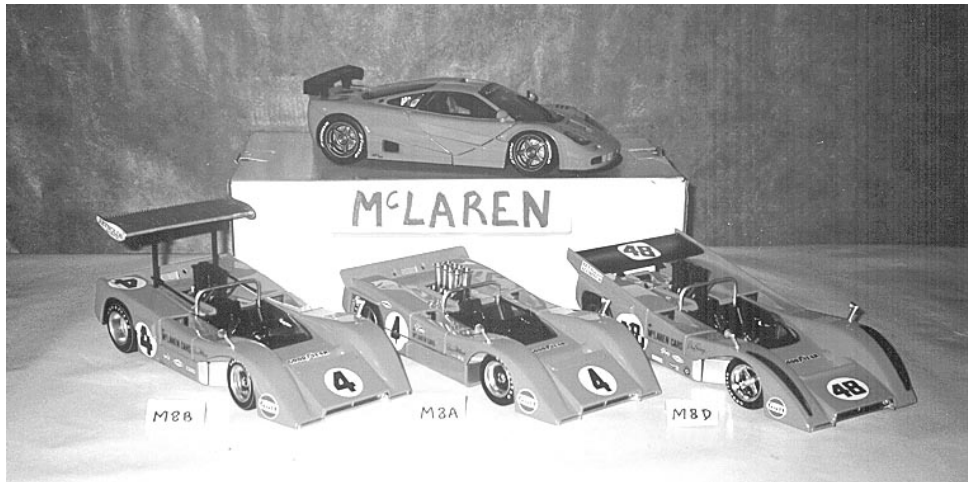


PHOTO ALBUM

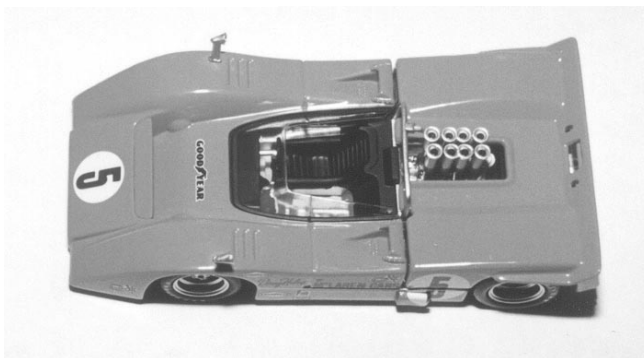


*Above: Eric Brockies
1:18 Kyosho Nissan
Skyline GTR*

*Right: The Airfix LCM
Mk3 & Sherman Tank
by Evan Blanch*



*Below: GMP 1:43
McLaren M8A. Note
The huge Panel gaps at
the front of the rear
deck.*



PITS REPORT

AUDI R8 Audi Dealer Artikel 2.00.000.01168

To celebrate the end of the millennium the city of Adelaide sanctioned a race for cars in the ALMS series. The race was called 'The Race of Two Thousand Years' or something similarly understated and was run on December 31 1999. To celebrate the event, and their success in the ALMS series Audi turned up with their lead car sporting the most amazing paint scheme I have ever seen on a race car. The scheme basically showed a crocodile lying in a river with jungle clad banks and a boat, birds, and (adorning the rear scoops) leaping fish. The car was immediately dubbed the Crocodile. The car duly won the race.

Minichamps, eventually modelled the car. Audi dealers also carried a specially boxed version of this model. Just behind Minichamps were ixo who released a version that was delayed by licensing hassles. The model is made to the usual high Minichamps standards in moulding, detail etc. However this is all lost to the most amazing example of the tampo printing art ever attempted. I will say no more about the model but leave you to marvel at the pictures (which I hope reproduce well enough.)

1968 McLaren M8A GMP 12422 1:43 scale

After the last issue of MA was done I was all set to rush out and buy a couple of the new Minichamps M8s when I found listed amongst the McLarens at Model Cars of the World's website the new GMP M8As. As they didn't have the Minichamps in stock yet and the GMP was listed as having engine detail I bought one of these instead. The car I bought was of course that of Denny Hulme (The 1968 Can Am Champion.)

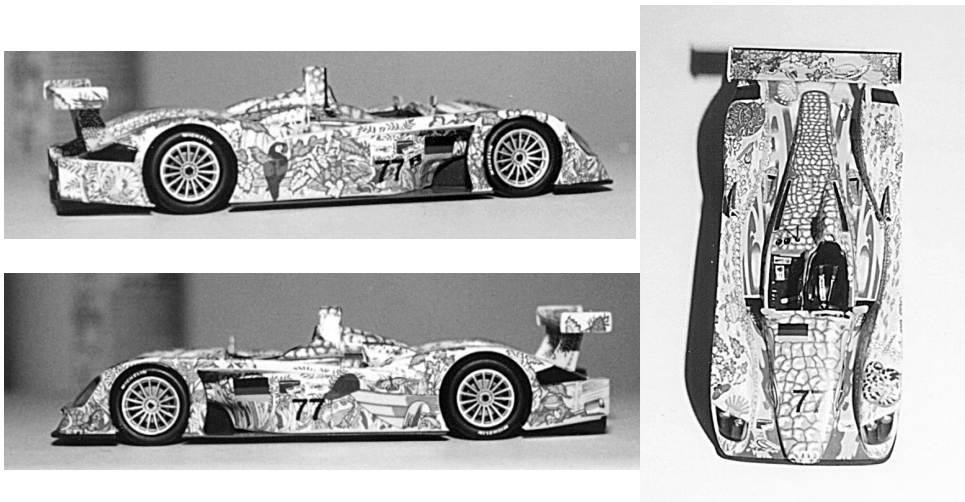
The castings are nice and clean. The accuracy of these is the subject of some debate on the Bulletin Boards I frequent (But so are the Minichamps). The paint is good though perhaps a trifle heavy. The colour looks okay to me though others think it is a bit too orange. I guess I will have to wait until the McLaren Trust M8A is complete. All signage looks good with no register problems. The cockpit looks well done with plenty of detail. The biggest problem I have with the model is the awful panel lines around the rear deck where it lifts off.

However once lifted it reveals a nice enough example of the huge Chev engine complete with plug wiring. One point that becomes apparent with the deck off is

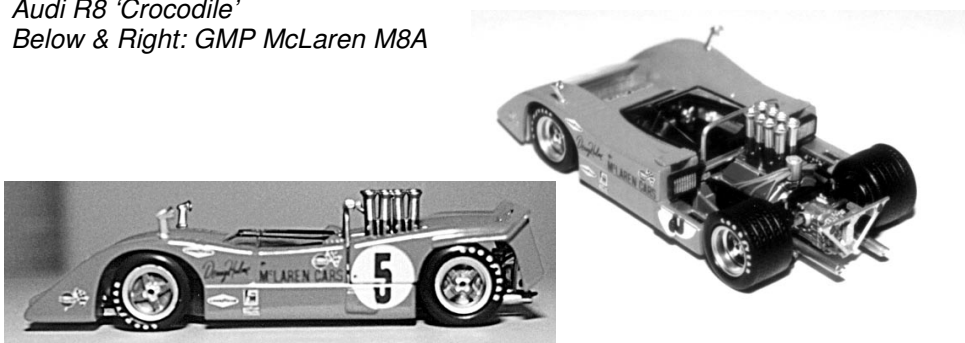
that the roll bar brace is completely ineffective as it stops just above the right hand cylinder head. The tyres are nicely moulded in the necessary huge size. The wheels while looking alright in themselves are spoiled by their bright backing plates.

A nice model though I personally will have to see the Minichamps version before I decide if the compromises for the engine detail are worth it. Also the NZ price is considerably higher than I paid for my example ex Australia.

Lee Tracey



Above: Overhead and side views of the Audi Dealer Edition model of the Audi R8 'Crocodile'
Below & Right: GMP McLaren M8A



THAT'S NEW? THAT'S NEWS!

Revell Monogram Various USA

2398 #88 UPS Taurus NASCAR 1:24
VW Convert. Top Up 1:18 Diecast 4 cols

6690 '64 Chevy Impala Amigo Pack
VW Convert. Top Down D/C 1:18 3 cols

Hasegawa Plastic Kits Japan

20217 Lancia Stratos 'Chardonnay' 1:24
9437 F4U-6 Corsair 'Reserve' 1:48 (8)
9439 KI-100-1 'Tony' 244 Ft. Reg. 1:48
9441 A4K Skyhawk RNZAF 1:48 (9)
9443 F104S Starfighter '82nd Ann.' 1:48
9445 Mess. Bf109G-14 Finland 1:48
370 F16CJ 'Weapons School' 1:72 (8)
372 P-40E Warhawk 'Aleut. Tiger' 1:72(9)
374 A-37 Dragonfly Edwards AFB 1:72(9)
8134 Spitfire MkII 41 Sqn 1:32 (9)

9436 Spitfire Mk VIII RAAF 1:48 (8)
9438 F16-CJ Fighting Falcon 'Tiger Meet' 1:48
9440 A6M2-N 'Rufe' Takuma Flying Gp. 1:48
9442 B5N2 Type 97 'Kate' 'Red Tail' 1:48 (9)
9444 Macchi C202 Folgore 'Baracca' 1:48 (9)
9446 F/A -18B Hornet NASA 1:48 (9)
371 MIG 29 Fulcrum Hopsten 40th Ann. 1:72
373 F106A Delta Dart 159 FIS 1:72 (9)
8133 F104C Starfighter 479 TFW 1:32 (8)

Tamiya Plastic Kits Japan

14090 Suzuki Hayabusa 1300 1:12 24252 VW New Beetle Motorised 1:24
61085 F4U-1D Corsair w/ Moto-Tug 1:48
36205 Kubelwagen Type 82 1:16

31341 A/craft Carrying Cruiser 'Mogami' 1:700

SunStar Diecast 1:18 China

Triumph GT6 3 colours (8)
'66 Mercedes 600 Pullman 3 cols (8)
Rolls Royce Phantom VI 3 cols (10)
'57 Facel Vega HK500 3 cols (9)
3851 Peugeot 206 WRC #1 MC01 (9)
3853 Peugeot 206 WRC Snyers (9)
3901 Ford Focus WRC Sainz MC01 (10)
3903 Ford Focus WRC Red Bull 01 (10)

'63 Ford Galaxie Conv. 3 cols (8)
'90 Lancia Delta HF road 3 cols (9)
'75 Lamborghini Jota SVR 4 cols (9)
3104 '90 Lancia Delta HF 'Martini' (9)
3852 Peugeot 206 WRC Gronholm Fin01 (9)
3852 Peugeot 206 WRC Gronholm Gr99 (9)
3902 Ford Focus WRC Delecour MC01 (10)
3904 Ford Focus WRC Sainz MC00 (10)

SunStar Diecast 1:43 China Currently Available Range

'59 Chevy Impala 4 colours
'69 Corvette Convertible Open 4 cols
'53 Cadillac Convertible Closed 8 cols
'00 Lincoln Limousine 3 cols
Jeep Closed top D Day
'90 Mini 4 cols
12035 Mini Cooper S 1st MC64
SunStar now own the Vitesse Name and some moulds

'68 Corvette Convertible Open 4 cols
'58 Buick Special 4 cols
'55 Chevrolet Bel Air Convertible Open 4 cols
'98 London Taxi TX1
Opel Blitz WW2 3 versions
12034 Mini Cooper S 1st MC67

IXO Diecast 1:43 China

RAM078 Peugeot 206WRC 1st Swed 02 RAM083 Peugeot 206WRC 1st TdC02
LMC015 Jaguar XJR12 #1 LM90 LMC016 Jaguar XJR12 #2 2nd LM90
LMC017 Jaguar XJR12 #4 LM90 LMC024 Bugatti 57C 1st LM39

Code 3 Diecast USA Smithsonian Air & Space Collection
11060 Lunar Module 11061 Lunar Roving Vehicle

Code 3 Diecast 1:64 USA
Ford e-350 Ambulance 6 Versions av Ford F-350 Ambulance 3 versions av

Sunnyside Diecast China
SS4363 Scooter (Vespa like) 4½ in SS4364 Scooter (Lambretta Like) 4½ in
SS4365 Funny Cart 4¾ in SS5740 '40 Ford 5 Window Coupe 1:34
SS5743 New Beetle 1:32 SS7730 '63 Corvette Sting Ray 1:24
SS6710 '59 Cadillac Series 62 Conv. 1:34 SS6853 '63 Checker Taxi 1:34
SS8603 Sunny Deposit Bank 7¾ in SS9701 '67 VW Beetle 1:18
SS9703 '60 Chev Impala L. Rider HT 1:24 SS9704 '60 Chev Impala L. Rider Conv. 1:24

Corgi Diecast 1:50 UK
US53505 ALF 700 CI/Cab Baltimore Co US50506 Seagrave 70th Ann. N. Haven CT(8)
US50805 Seagrave K Baltimore Co (7) US53407 MCI 102 DL3 Bonanza (10)
US54312 GM Fishbowl NY Metro Transit US55023 PCC Car Brooklyn (9)
US55024 PCC Car Baltimore Transit (12)

Corgi Diecast 1:50 UK New Lionelville Range for Lionel Train Layouts
US50505 Seagrave & 0th Ann. Fire Truck US52311 Mack B Lowboy & Luffing Shovel(8)
US52906 Diamond T Semi Skirted Fuel Tanker Lion Fuel (9)
US74503 White Flatbed Truck w/Trees (12)

Corgi Diecast UK Aviation Archive (End No. = Scale)
AA31104 B-17F 'Memphis Belle' 144 AA31803 Boeing B29 'Enola Gay' 144
AA32103 Bf109E-3 JG54 Grunherz (8) 72 AA32204 P-51D Mustang Lt. Col J. Meyer 72
AA32501 Junkers Ju87B-2 Stuka (10) 72 AA32805 Mosquito FB VI 248 Sqn L/E (9) 72
AA33301 B-17F 'Memphis Belle' (10) 72 AA33901 Spitfire 1a 609 Sqn New (8) 32
AA33902 Spitfire 1 19 Sqn QV-K L/E 32 AA99120 Guadalcanal Set Corsair & Zero 72

Corgi Diecast UK Film & TV Related
CC05801 Yellow Submarine CC05901 Bullitt Mustang & McQueen fig.
CC06001 Blues Bros. Dodge & fig. (10) CC54508 Smokey & the Bandit Pontiac & fig.(11)



Above: Code 3 Ford E-350 Ambulance Chicago IL



Right Sunnyside 4363 Scooter in Pink, Red & Blue

Below: Corgi US52906 Diamond T Semi Skirted Fuel Tanker part or the new Lionelville Range

